

SIMPSON**Strong-Tie**

Schema chiodatura



REV

0

REV DATE

24/10/25

DWG NAME

C_BTALU1200-160_2D0_NP_JTP-IT

Codici

=

BTALU1200/160

Mezzo di giunzione

=

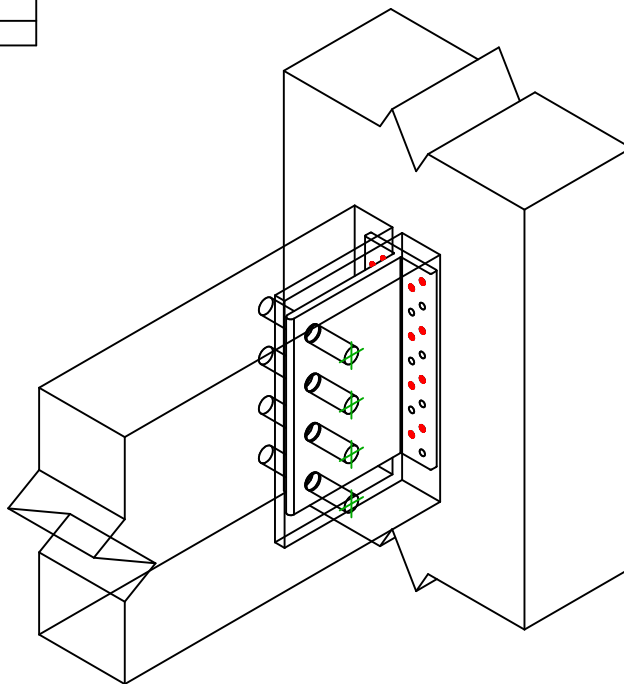
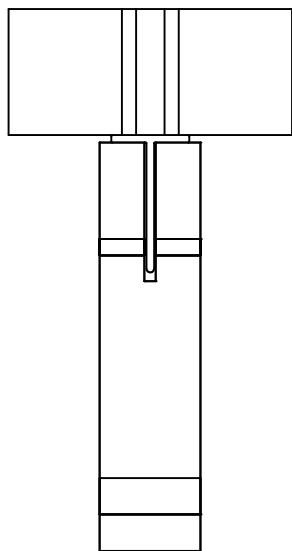
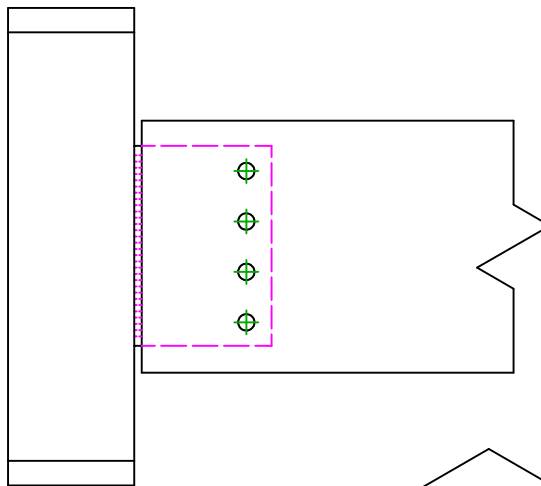
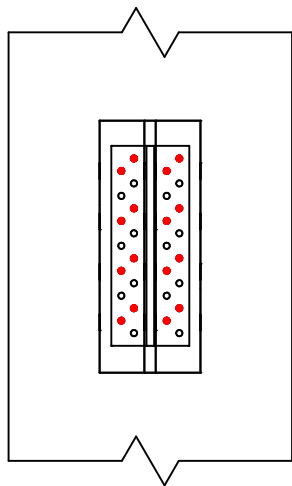
Legno a legno

Trave a pilastro

Tipo di fissaggio

=

Chiodatura parziale

Fissaggio
supporto

Simbolo

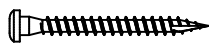


Mezzo di giunzione

CNA



CSA



-

Codici

CNA4.0X50

CSA5.0X35/40

-

Q.tà

16

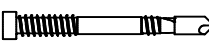
Fissaggio
travetto

Simbolo

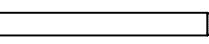


Mezzo di giunzione

SDD



STD



Codici

SDD7.5

STD12

Q.tà

4