

SIMPSON**Strong-Tie**

Schema chiodatura



REV

0

REV DATE

19/08/24

DWG NAME

C_ABR10525_2D0_NP_CTB-5-IT

Codici

=

ABR10525

Mezzo di giunzione

=

Legno a legno

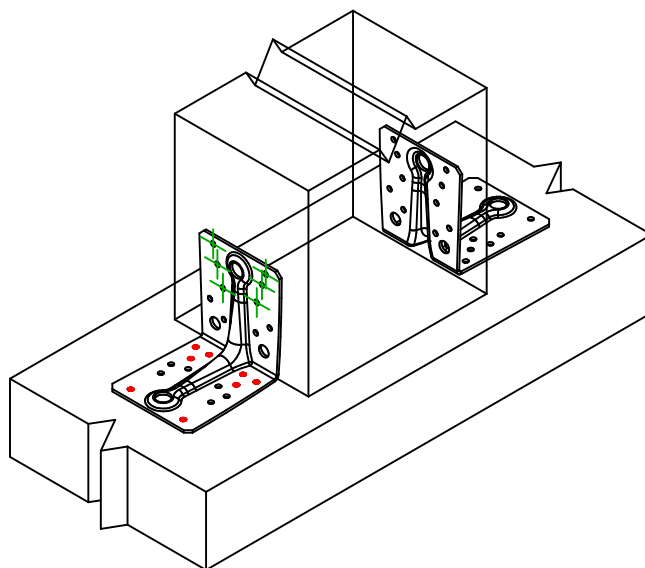
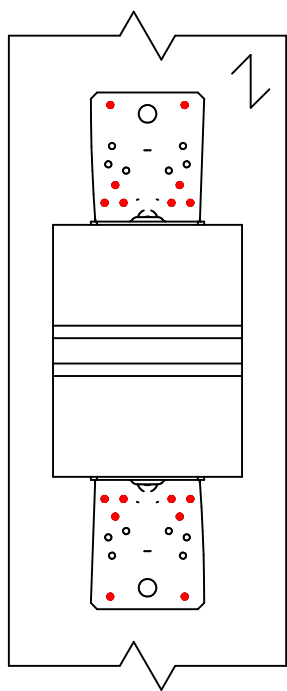
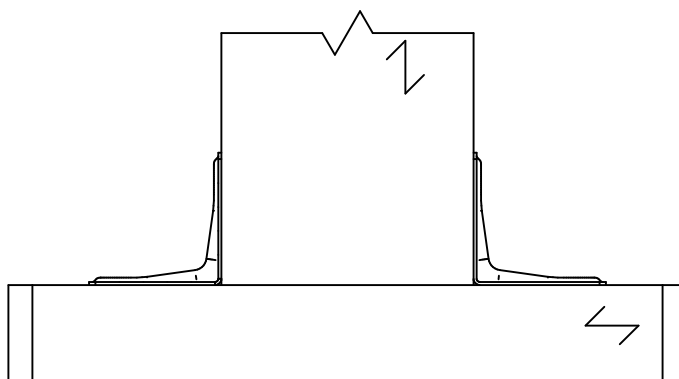
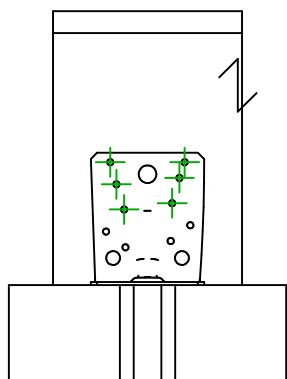
Pilastro a trave

Tipo di fissaggio

=

Chiodatura parziale

Schema chiodatura n. 5

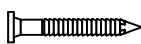
Fissaggio
supporto

Simbolo



Mezzo di giunzione

CNA



CSA



-

Codici

CNA4.0X40/60

CSA5.0X40

-

Q.tà

8 x 2

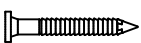
Fissaggio
travetto

Simbolo

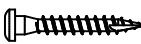


Mezzo di giunzione

CNA



CSA



Codici

CNA4.0X40/60

CSA5.0X40

Q.tà

6 x 2