

SIMPSON**Strong-Tie**

Spikermønster



REV

0

REV DATE

24/10/25

DWG NAME

C_PU90_2D0_NP_B-PTRS-NO

Art. Nr.

=

PU90-B

Festemidler

=

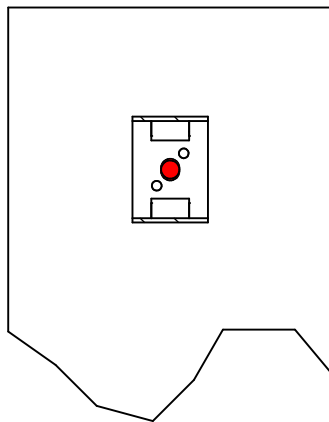
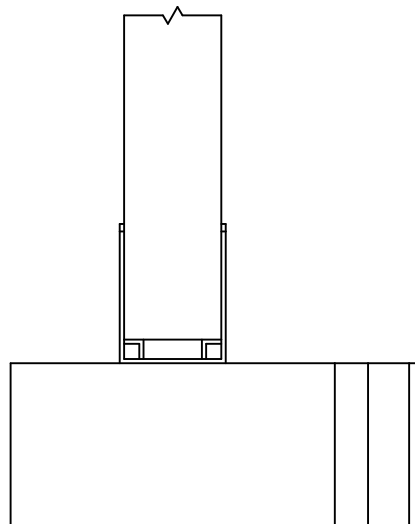
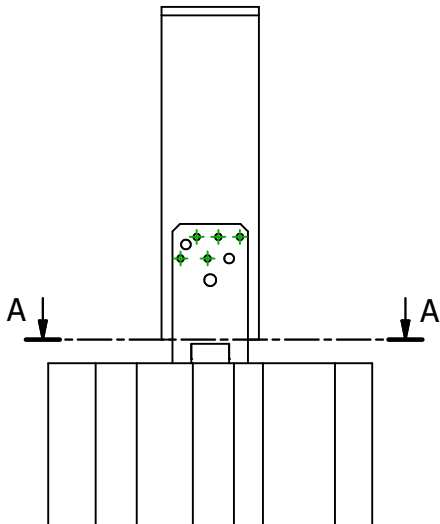
Tre på betong/stål

Søyle til betong eller stål

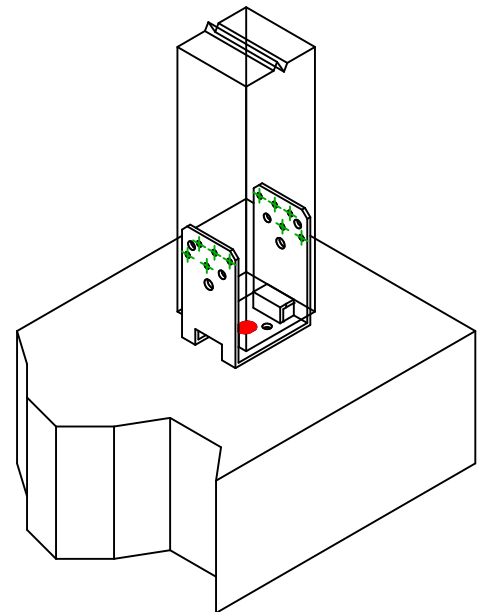
Type festemiddel

=

-



A-A (1:7)

Festemidler i
hovedbjelke

Symbol

Festemidler

Art. Nr.

Antall



FM-753

FM-753 CRACK 3DG M16X150/30

-

-

1

-

-

Festemidler i
sekundærbjelke

Symbol

Festemidler

Art. Nr.

Antall



CNA

CNA4.0X50

-

-

10