

Art. Nr.

=

PU90-B

Fastgørelsesmidler

=

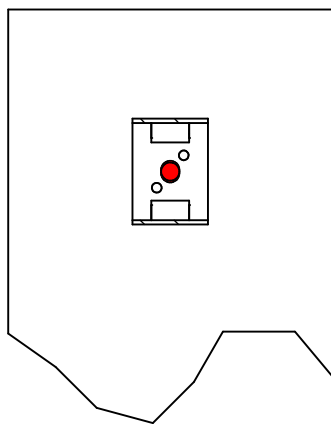
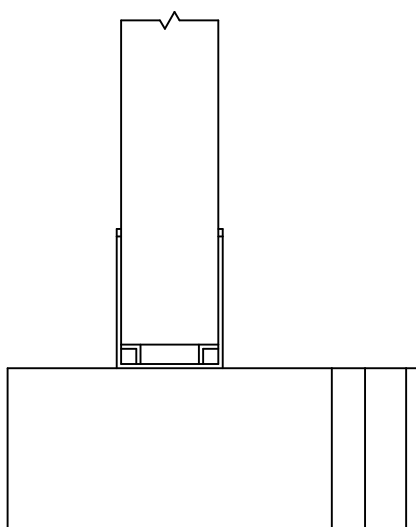
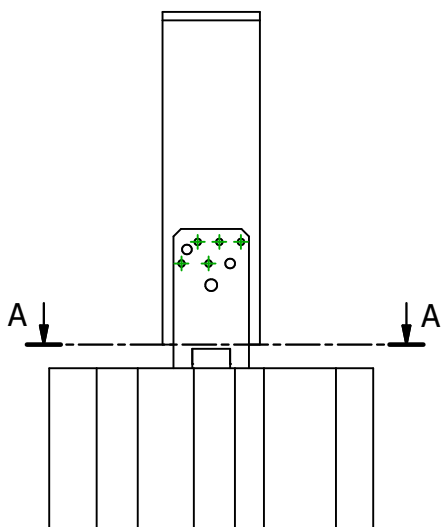
Træ til beton/stål

Søjle til beton eller stål

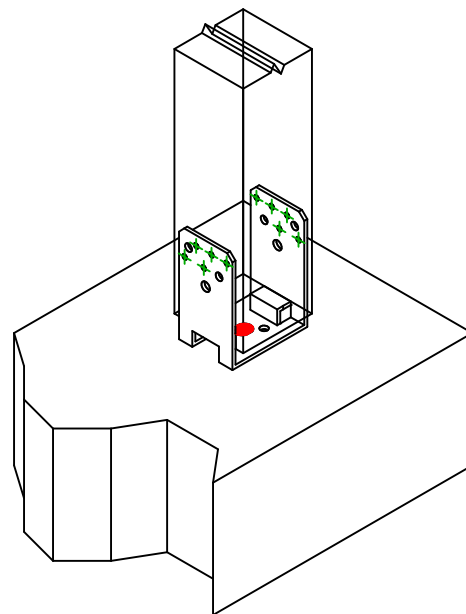
Type af fastgørelse

=

-



A-A (1:7)


Fastgørelsesmidler
i hovedbjælke

Symbol

Fastgørelsesmidler

Art. Nr.

Antal



FM-753

FM-753 CRACK 3DG M16X150/30

-

-

1

-

-

Fastgørelsesmidler
i sekundær bjælke

Symbol

Fastgørelsesmidler

Art. Nr.

Antal



CNA

CNA4.0X50

-

-

10