

SIMPSON**Strong-Tie**

Utspikning



REV

0

REV DATE

24/10/25

DWG NAME

C_PU100_2D0_NP_B-PTRS-SE

Art. Nr.

=

PU100-B

Fästelement

=

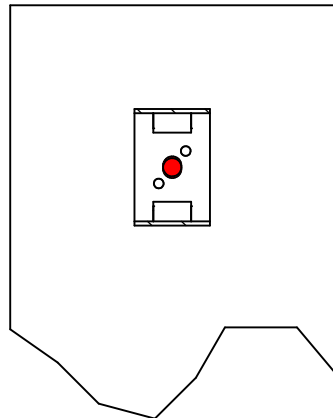
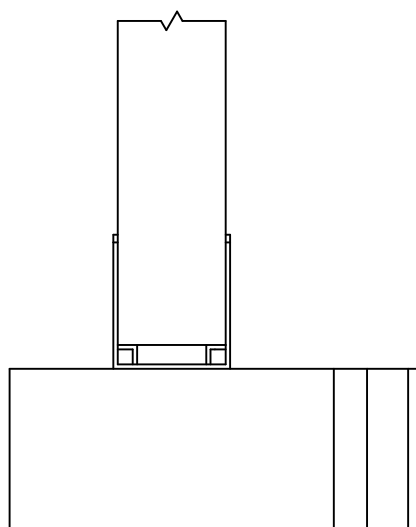
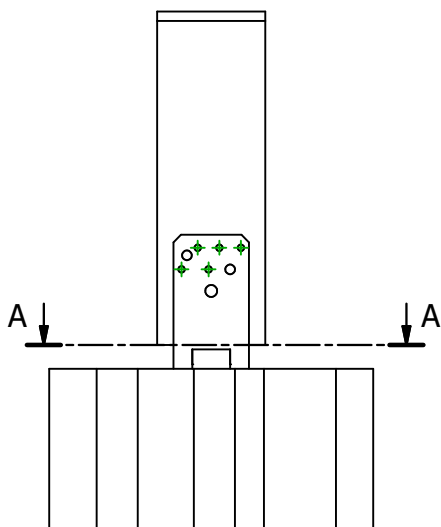
Balk till betong/stål

Stolpe till betong eller stål

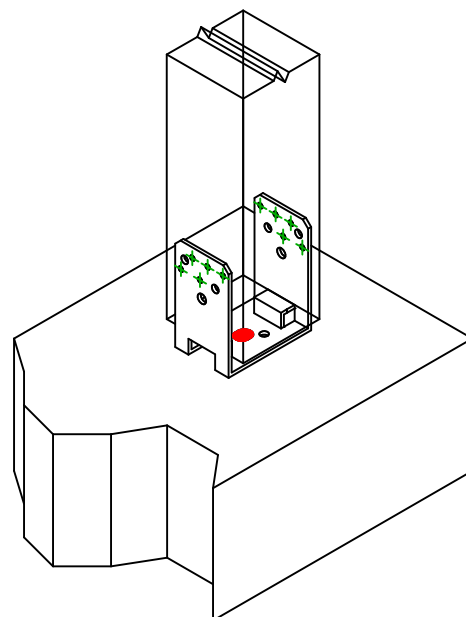
Typ av infästning

=

-



A-A (1:7)

Infästning i
huvudbalk

Symbol

Fästelement

Art. Nr.

Antal



FM-753

FM-753 CRACK 3DG M16X150/30

-

-

1

-

-

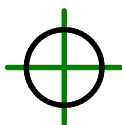
Fästelement i
sekundärbalk

Symbol

Fästelement

Art. Nr.

Antal



CNA

CNA4.0X50

-

-

10