

SIMPSON**Strong-Tie**

Schema chiodatura



REV

0

REV DATE

24/10/25

DWG NAME

C_CBH220_2D0_NP_JTP-IT

Codici

=

CBH220/2.5

Mezzo di giunzione

=

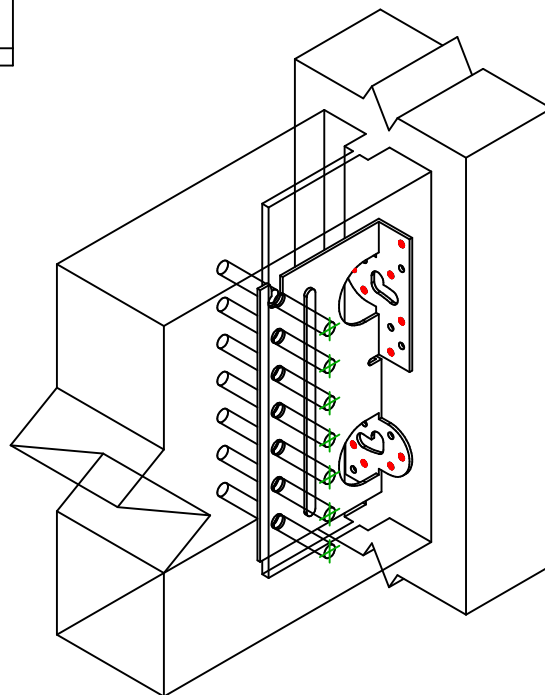
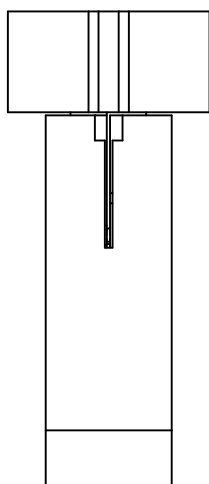
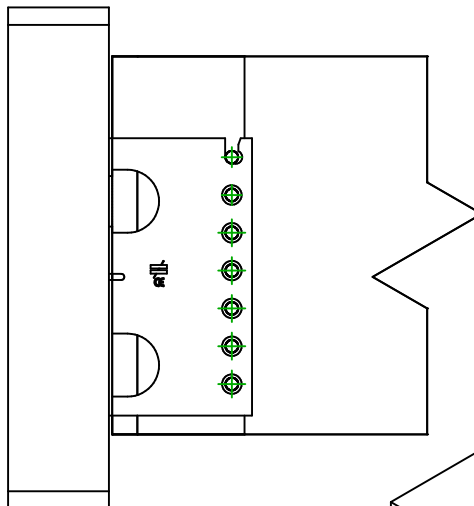
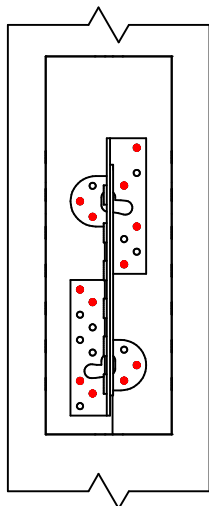
Legno a legno

Trave a pilastro

Tipo di fissaggio

=

Chiodatura parziale

Fissaggio
supporto

Simbolo



Mezzo di giunzione

CNA

-

-

Codici

CNA4.0X60

-

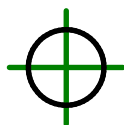
-

Q.tà

12

Fissaggio
travetto

Simbolo



Mezzo di giunzione

STD

-

Codici

STD10

-

Q.tà

7