

SIMPSON

Strong-Tie

Spikermønster



REV

0

REV DATE

26/07/24

DWG NAME

C_SAE500_2D0_NP_JTB-SSH-NO

Art. Nr.

=

SAEL500

Festemidler

=

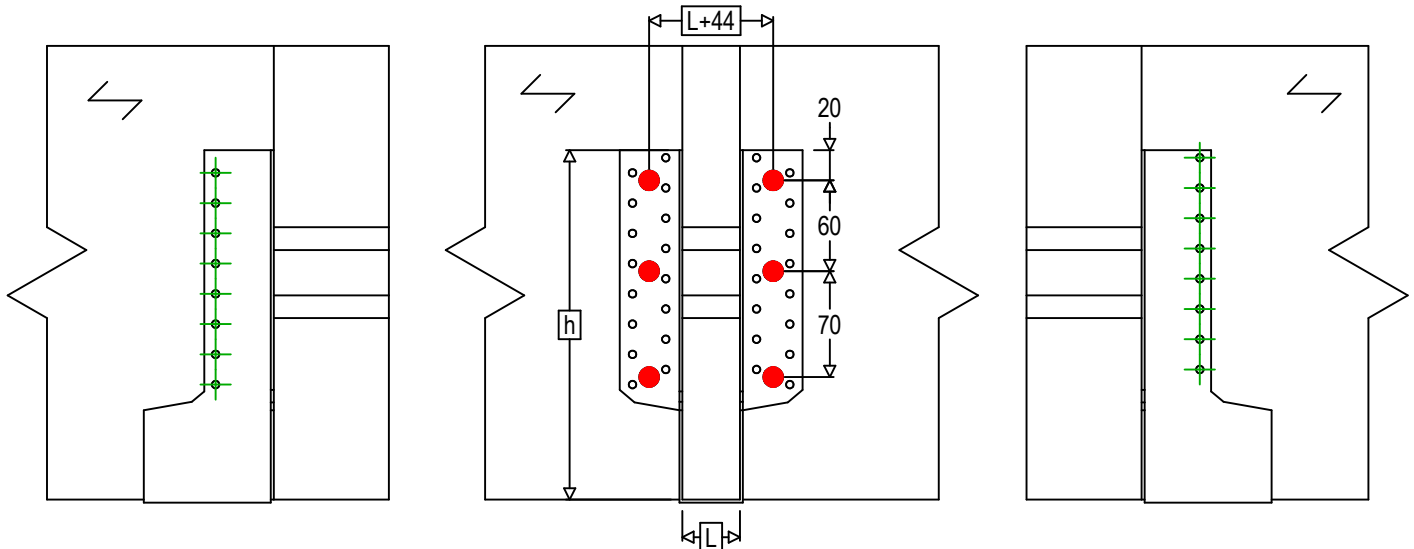
Tre til Tre

Bjelke til bjelke

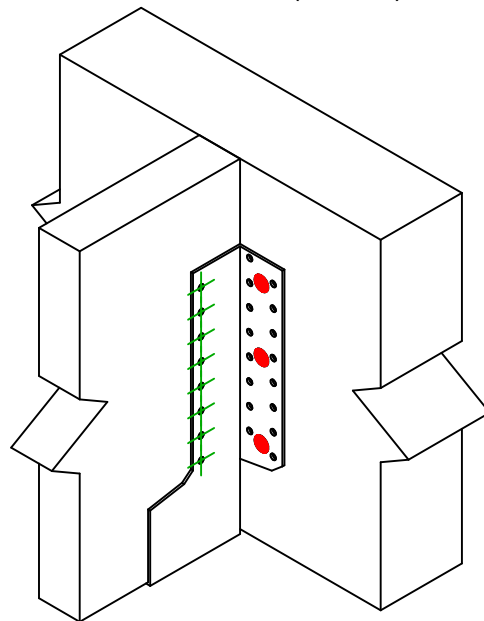
Type festemiddel

=

Montering med SSH



$$h = (380 - L) / 2$$

Festemidler i
hovedbjelke

Symbol

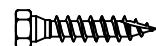
Festemidler

Festemidler

Antall



SSH



SSH12.0X60

-

-

6

-

-

Festemidler i
sekundærbjelke

Symbol

Festemidler

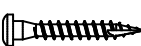
L < 64mm

L > 64mm

Antall



CNA

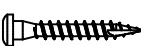


CNA4.0X35

CNA4.0X50

16

CSA



CSA5.0X35

CSA5.0X40