

SIMPSON

Strong-Tie

Schemat montażu



REV

0

REV DATE

26/07/24

DWG NAME

C_SAE380_2D0_NP_JTB-SSH-PL

Produkt

=

SAEL380

Łączniki

=

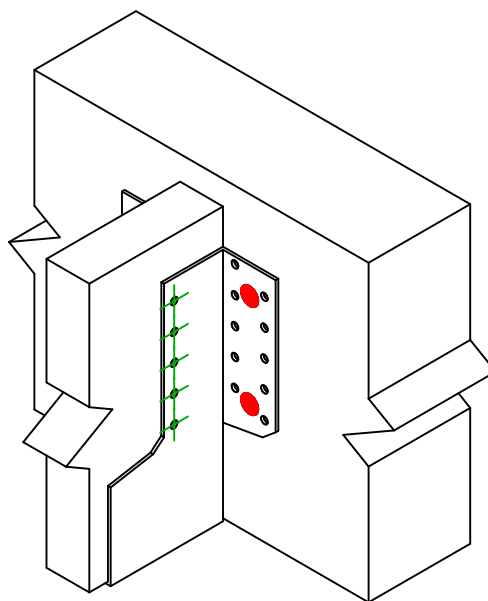
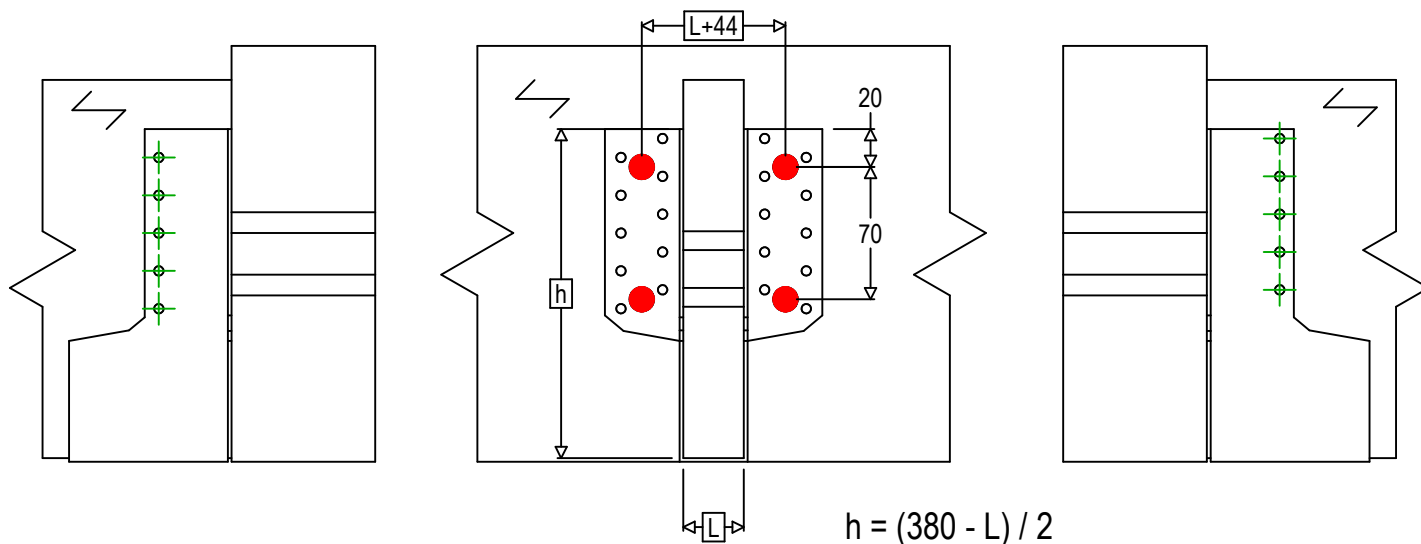
Drewno - drewno

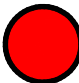




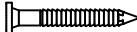

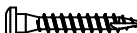
Belka - belka

Typ montażu

=

Montaż wkrętami SSH



Łączniki belka główna	Symbol	Łączniki	Łączniki		Szt.
		SSH  	SSH12.0X60		4
		-	-		
		-	-		
Łączniki belka drugorzędna	Symbol	Łączniki	L < 64mm	L > 64mm	Szt.
		CNA  	CNA4.0X35	CNA4.0X50	10
		CSA  	CSA5.0X35	CSA5.0X40	