

SIMPSON

Strong-Tie

## Schemat montażu



REV

0

REV DATE

26/07/24

DWG NAME

C\_SAEL300\_2D0\_NP\_JTB-SSH-PL

Produkt

=

SAEL300

Łączniki

=

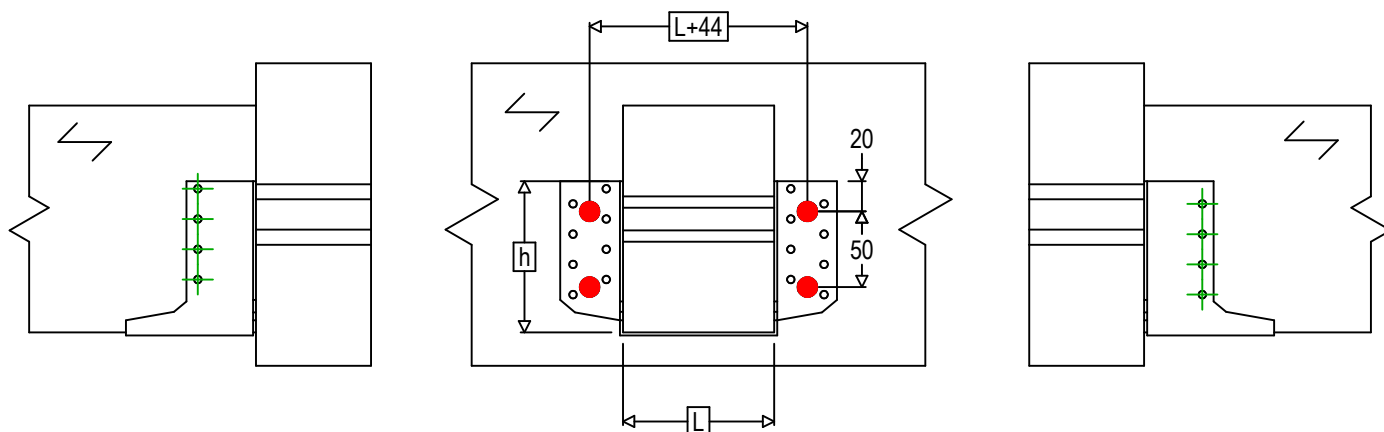
Drewno - drewno

Belka - belka

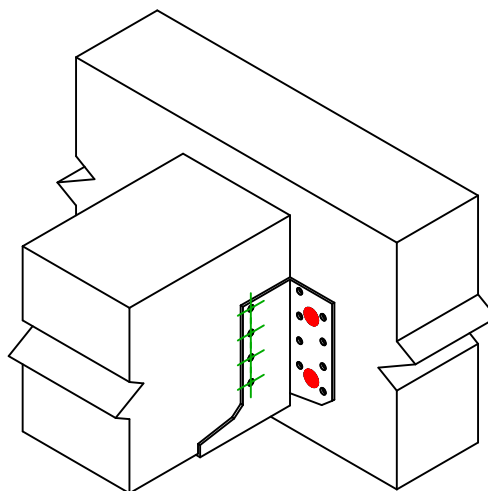
Typ montażu

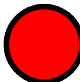




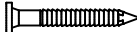

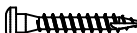
=

Montaż wkrętami SSH



$$h = (300 - L) / 2$$



Łączniki belka główna	Symbol	Łączniki	Łączniki		Szt.
		SSH  	SSH12.0X60		4
		-	-		
		-	-		
Łączniki belka drugorzędna	Symbol	Łączniki	L < 64mm	L > 64mm	Szt.
		CNA  	CNA4.0X35	CNA4.0X50	8
		CSA  	CSA5.0X35	CSA5.0X40	