

SIMPSON

Strong-Tie

Spikermønster



REV

0

REV DATE

26/07/24

DWG NAME

C_SAE300_2D0_NP_JTB-SSH-NO

Art. Nr.

=

SAEL300

Festemidler

=

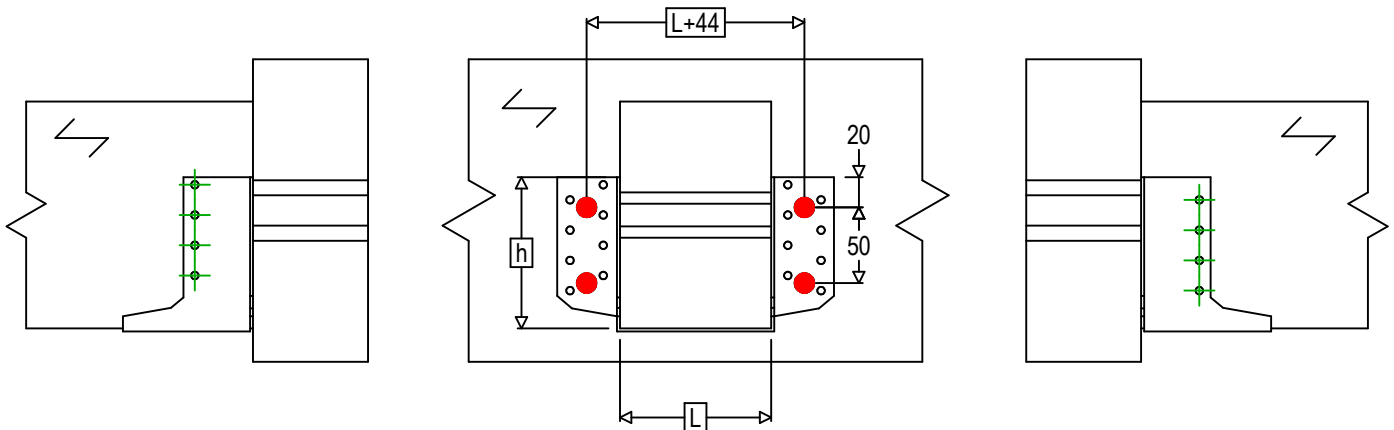
Tre til Tre

Bjelke til bjelke

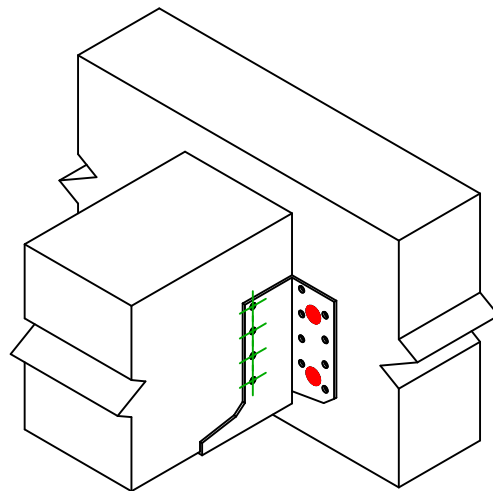
Type festemiddel




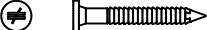
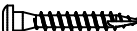
=

Montering med SSH



$$h = (300 - L) / 2$$



Festemidler i hovedbjelke	Symbol	Festemidler	Festemidler		Antall
		SSH 	SSH12.0X60		4
		-	-		
		-	-		
Festemidler i sekundærbjelke	Symbol	Festemidler	L < 64mm	L > 64mm	Antall
		CNA 	CNA4.0X35	CNA4.0X50	8
		CSA 	CSA5.0X35	CSA5.0X40	