

SIMPSON**Strong-Tie**

Schemat montażu



REV

0

REV DATE

26/07/24

DWG NAME

C_SAEL300_2D0_NP_JTB-FN-PL

Produkt

=

SAEL300

Łączniki

=

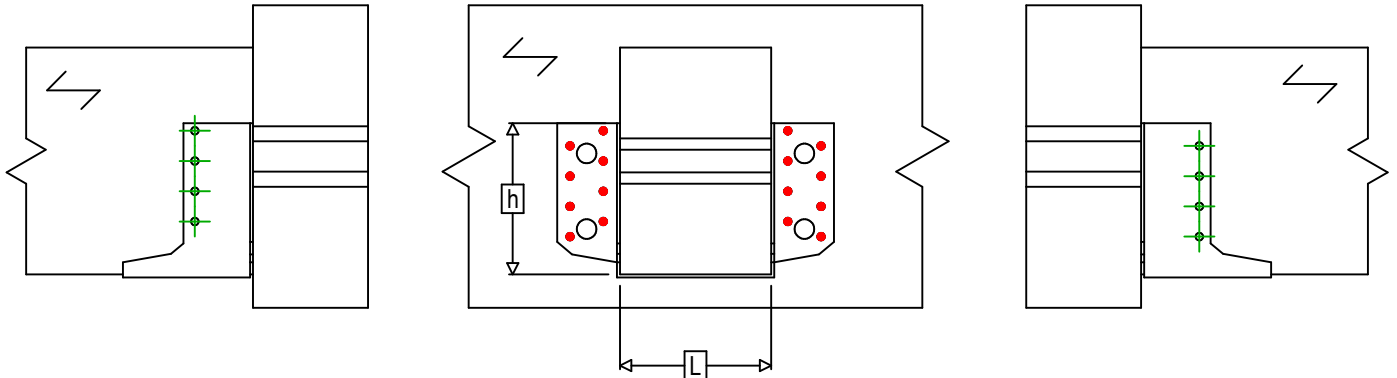
Drewno - drewno

Belka - belka

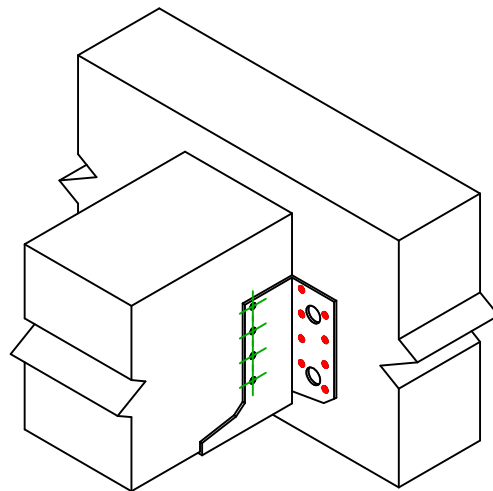
Typ montażu

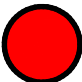




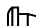
=

Pełne gwoździowanie



$$h = (300 - L) / 2$$



Łączniki belka główna	Symbol	Łączniki	Łączniki		Szt.
		CNA 	CNA4.0X35 / CNA4.0X50		16
		CSA 	CSA5.0X35 / CSA5.0X40		
		-	-		
Łączniki belka drugorzędna	Symbol	Łączniki	L < 64mm	L > 64mm	Szt.
		CNA 	CNA4.0X35	CNA4.0X50	8
		CSA 	CSA5.0X35	CSA5.0X40	