

Art. Nr.

=

SAE300

Fastgørelsesmidler

=

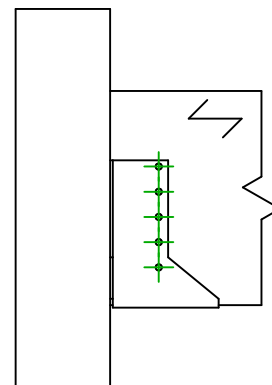
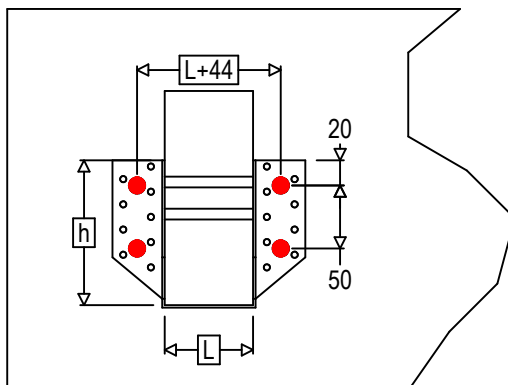
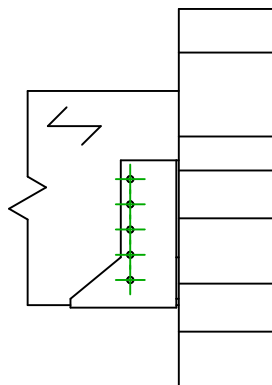
Træ til beton/stål

Bjælke til bjælke

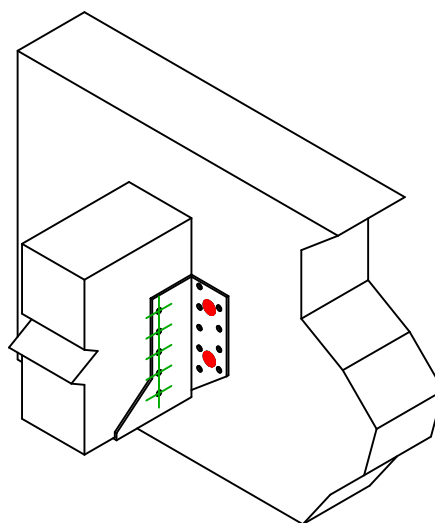
Type af fastgørelse

=

Fastgørelse til fast overflade



$$h = (300 - L) / 2$$


Fastgørelsesmidler
i hovedbjælke

Symbol

Fastgørelsesmidler

Fastgørelsesmidler

Antal



WA



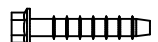
WA12104

LMAS



LMASM12

THD



THD10080

4

Fastgørelsesmidler
i sekundær bjælke

Symbol

Fastgørelsesmidler

L < 64mm

L > 64mm

Antal



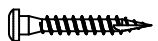
CNA



CNA4.0X35

CNA4.0X50

CSA



CSA5.0X35

CSA5.0X40

10