

**SIMPSON****Strong-Tie**

# Spikermønster



REV

0

REV DATE

26/07/24

DWG NAME

C\_SAE300\_2D0\_NP\_JTB-SSH-NO

Art. Nr.

=

SAE300

Festemidler

=

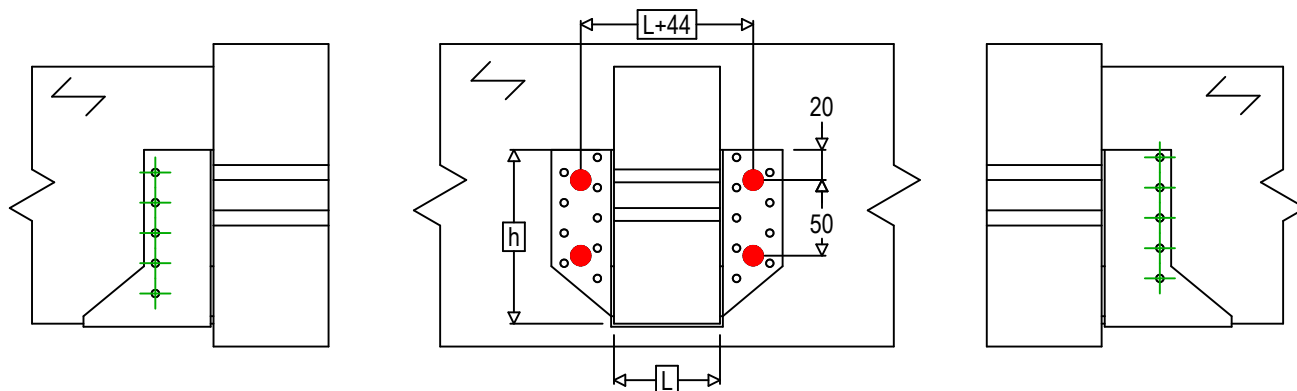
Tre til Tre

Bjelke til bjelke

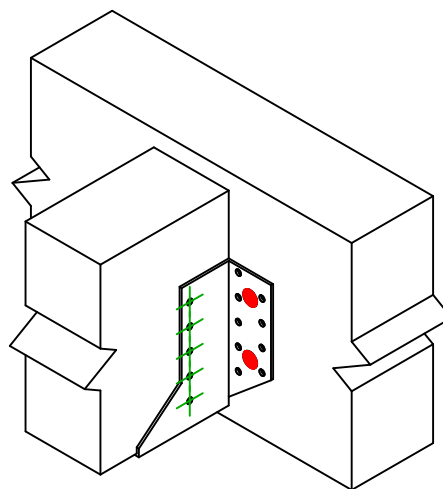
Type festemiddel

=

Montering med SSH



$$h = (300 - L) / 2$$

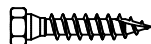
Festemidler i  
hovedbjelke

Symbol



Festemidler

SSH



Festemidler

SSH12.0X60

-

-

-

-

Antall

4

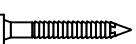
Festemidler i  
sekundærbjelke

Symbol



Festemidler

CNA



CSA



L &lt; 64mm

L &gt; 64mm

CNA4.0X35

CNA4.0X50

CSA5.0X35

CSA5.0X40

Antall

10