

**SIMPSON****Strong-Tie**

# Schemat montażu



REV

0

REV DATE

26/07/24

DWG NAME

C\_SAE300\_2D0\_NP\_JTB-FN-PL

Produkt

=

SAE300

Łączniki

=

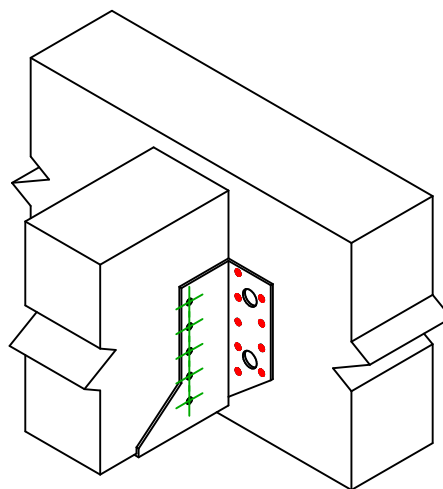
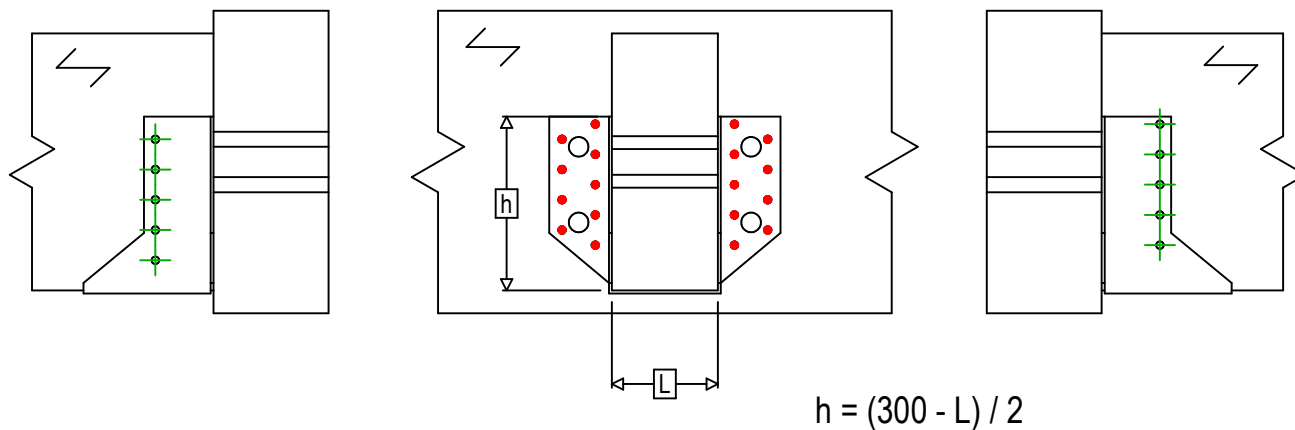
Drewno - drewno

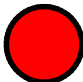

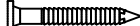







Belka - belka

Typ montażu

=

Pełne gwoździowanie



Łączniki belka główna	Symbol	Łączniki	Łączniki		Szt.
		CNA  	CNA4.0X35 / CNA4.0X50		18
		CSA  	CSA5.0X35 / CSA5.0X40		
		-	-		
Łączniki belka drugorzędna	Symbol	Łączniki	L < 64mm	L > 64mm	Szt.
		CNA  	CNA4.0X35	CNA4.0X50	10
		CSA  	CSA5.0X35	CSA5.0X40	