

SIMPSON**Strong-Tie**

Spikermønster



REV

0

REV DATE

26/07/24

DWG NAME

C_SAE250_2D0_NP_JTB-FN-NO

Art. Nr.

=

SAE250

Festemidler

=

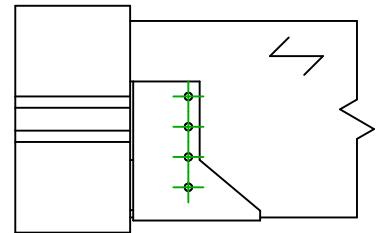
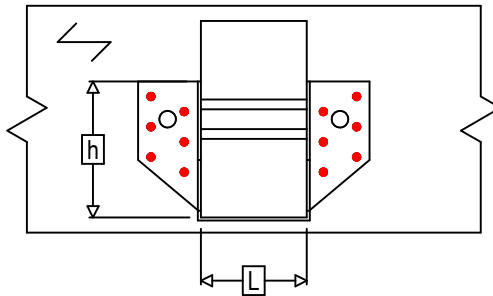
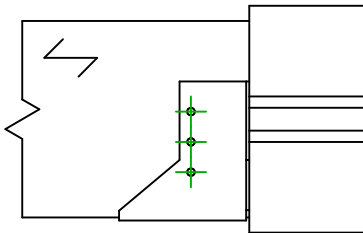
Tre til Tre

Bjelke til bjelke

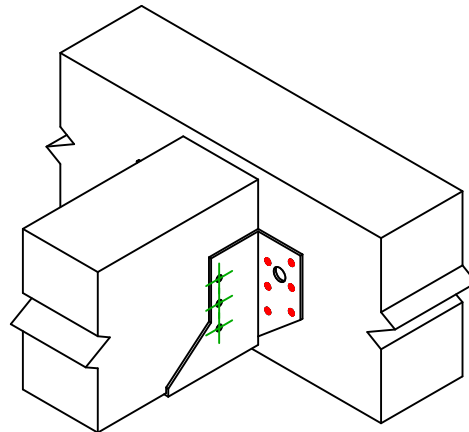
Type festemiddel

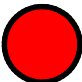




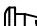
=

Full utspikring



$$h = (250 - L) / 2$$



Festemidler i hovedbjelke	Symbol	Festemidler	Festemidler		Antall
		CNA 	CNA4.0X35 / CNA4.0X50		12
		CSA 	CSA5.0X35 / CSA5.0X40		
		-	-		
Festemidler i sekundærbjelke	Symbol	Festemidler	L < 64mm	L > 64mm	Antall
		CNA 	CNA4.0X35	CNA4.0X50	7
		CSA 	CSA5.0X35	CSA5.0X40	