

SIMPSON**Strong-Tie**

Spikermønster



REV

0

REV DATE

26/07/24

DWG NAME

C_SAE200_2D0_NP_JTB-SSH-NO

Art. Nr.

=

SAE200

Festemidler

=

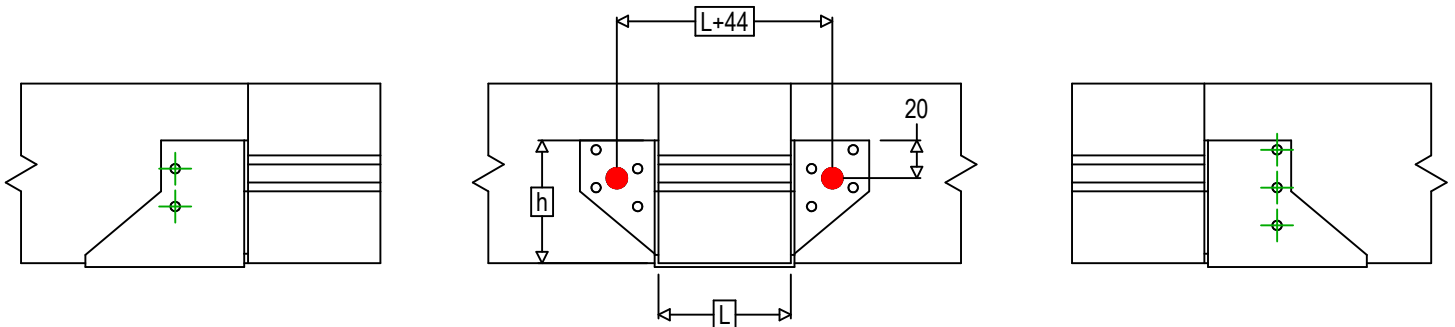
Tre til Tre

Bjelke til bjelke

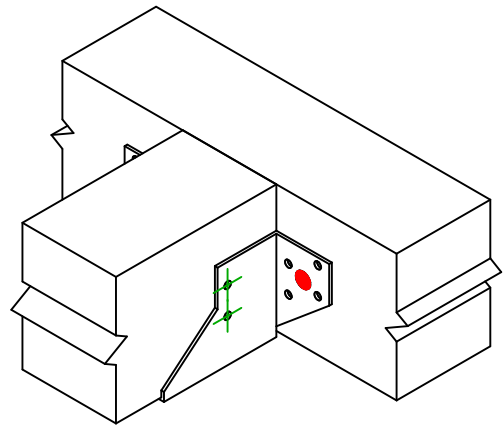
Type festemiddel

=

Montering med SSH



$$h = (200 - L) / 2$$

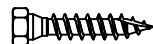
Festemidler i
hovedbjelke

Symbol



Festemidler

SSH



Festemidler

SSH10.0X40

Antall

2

-

-

-

-

Festemidler i
sekundærbjelke

Symbol



Festemidler

CNA



CSA



L < 64mm

L > 64mm

CNA4.0X35

CNA4.0X50

CSA5.0X35

CSA5.0X40

Antall

5