

**SIMPSON****Strong-Tie**

# Schemat montażu



REV

0

REV DATE

24/10/25

DWG NAME

C\_ETSN100\_2D0\_NP\_JTP-PL

Produkt

=

ETSN100

Łączniki

=

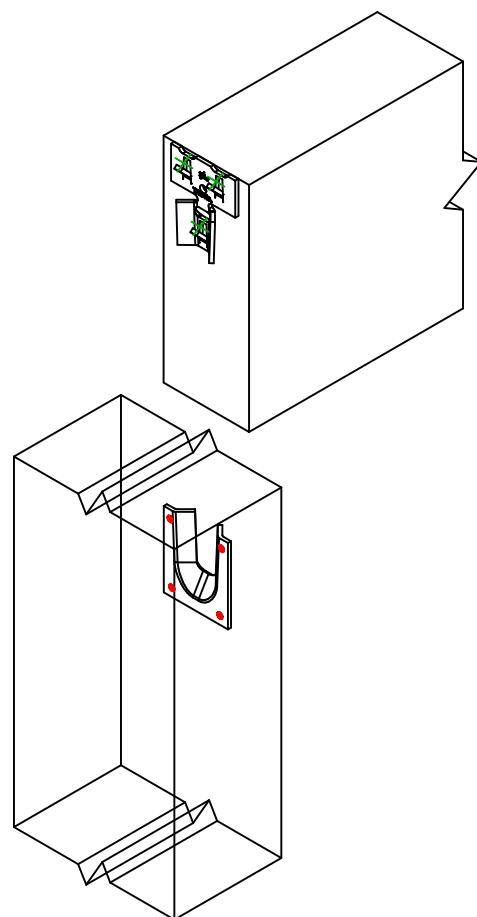
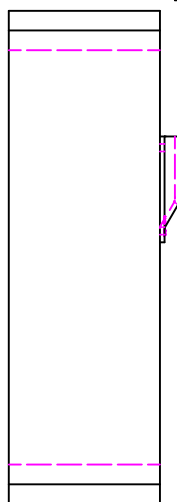
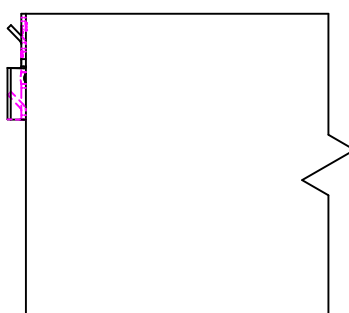
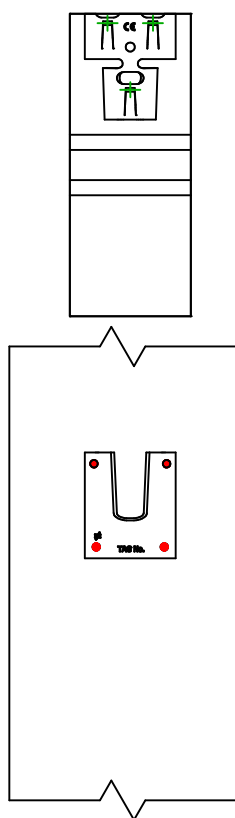
Drewno - drewno

Belka do słupa

Typ montażu

=


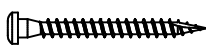
Pełne gwoździowanie

Łączniki  
belka główna

Symbol



Łączniki

CNA  CSA  

-

Produkt

CNA4.0X50

CSA5.0X40

-

Szt.


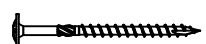
4

Łączniki  
belka  
drugorzędna

Symbol



Łączniki

SWW  SWW  SWW  

Produkt

SWW6.0X120

SWW6.0X160

SWW6.0X80

Szt.

3